

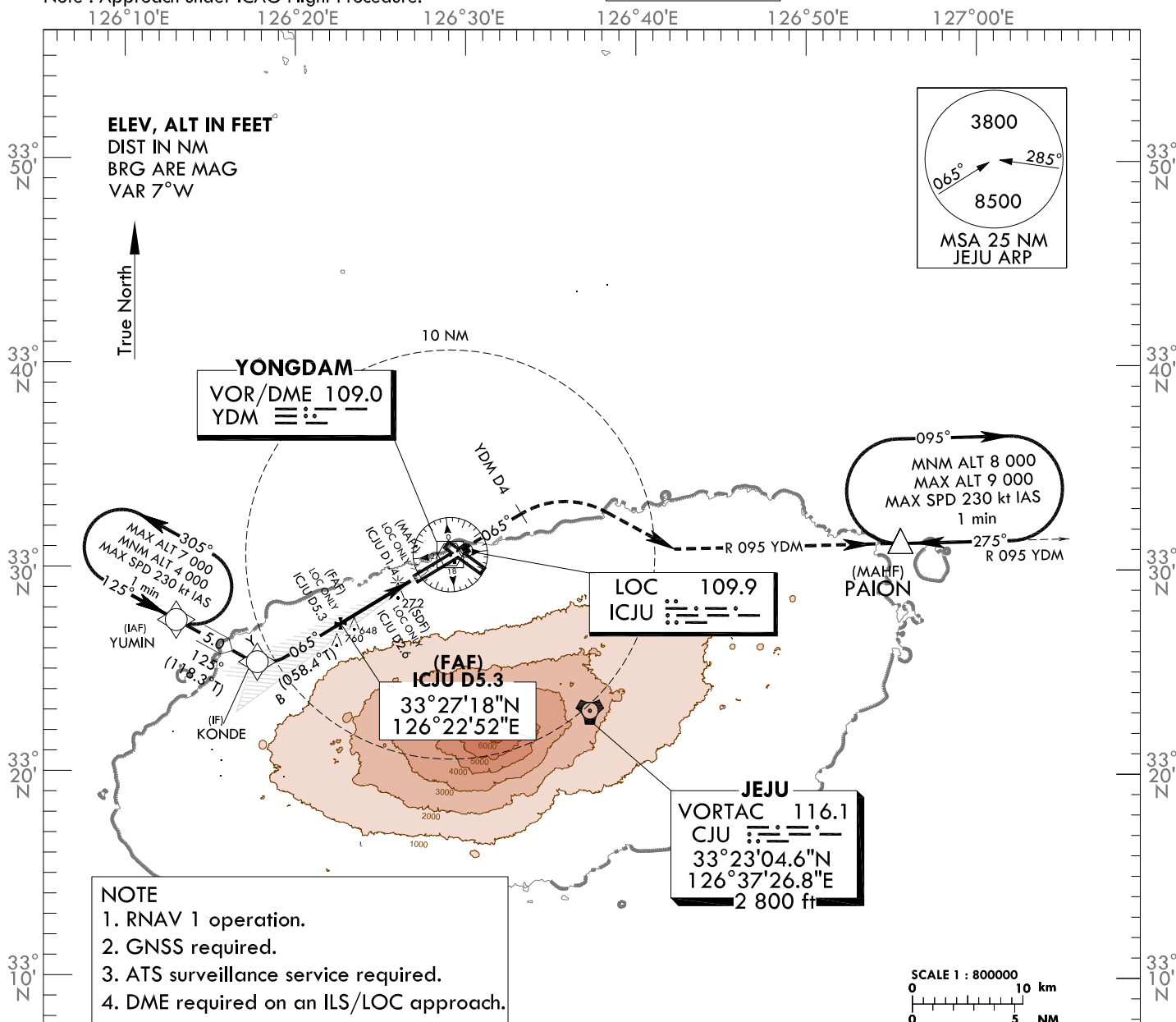
**INSTRUMENT
APPROACH
CHART - ICAO**

AERODROME ELEV 119 ft
HEIGHTS RELATED TO
THR RWY 07 - ELEV 87 ft

JEJU APP	121.2
	124.05
JEJU TWR	118.125
	118.2

JEJU/Jeju Intl(RKPC)
ILS Z or LOC Z RWY 07
CAT II

Note : Approach under ICAO Flight Procedure.

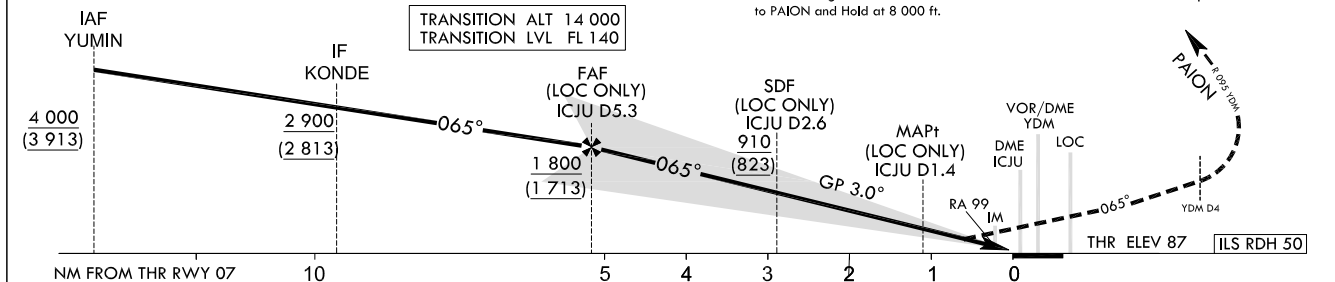


NOTE
1. RNAV 1 operation.
2. GNSS required.
3. ATS surveillance service required.
4. DME required on an ILS/LOC approach.

RECOMMENDED PROFILE(LOC ONLY)	DME ICJU	5	4	3	2	1.4
Final Approach Gradient 5.32%, 323 ft/NM	ALT(HGT)	1 690 (1 603)	1 367 (1 280)	1 044 (957)	721 (634)	530 (443)

MISSED APPROACH

Climb straight ahead until YDM D4 then turn RIGHT turn to intercept R 095 YDM to PAION and Hold at 8 000 ft.



CATEGORY	DA(DH)/MDA(MDH)	RVR					Rate of descent						
		A	B	C	D	DL	V/V fpm	60	90	120	150	180	
STA	CAT-1	FULL	RVR 550 m, VIS 750 m					1) For CAT D/DL aeroplane conducting an autoland. * Timing Not authorized for defining MAPt. * Circling Not authorized.	318	478	637	796	955
		ALS INOP	1 200 m										
	LOC	FULL	1 600 m										
		ALS INOP	2 300 m										
CAT-II		187(100)	300 m			300 m/350 m							

Change : Amended coordinate and radial format.

JEJU/Intl(RKPC)
ILS Z or LOC Z RWY 07
CAT II

AERONAUTICAL DATA TABULATION

ILS/LOC Approach to RWY 07 from YUMIN (IAF)		
Fix/point		Coordinates
YUMIN (IAF)		33°27'25.7"N 126°13'15.5"E
KONDE (IF)		33°25'03.0"N 126°18'31.0"E
5.3D ICJU (FAP)	- BRG 65.21°/5.34NM ICJU	33°27'17.6"N 126°22'51.8"E
2.6D ICJU (SDF LOC only)	- BRG 65.21°/2.60NM ICJU	33°28'43.8"N 126°25'39.3"E
1.4D ICJU (MAPt LOC only)	- BRG 65.21°/1.40NM ICJU	33°29'21.6"N 126°26'52.7"E
THR RWY 07		33°29'59.57"N 126°28'06.50"E
DME ICJU		33°30'09.0"N 126°28'15.7"E
YDM VOR/DME		33°30'41.3"N 126°29'15.3"E
4D YDM	- BRG 65.21°/4.00NM YDM	33°32'42.4"N 126°33'23.4"E
PAION	- BRG 95.00°/22.00NM YDM	33°31'18.0"N 126°55'34.0"E

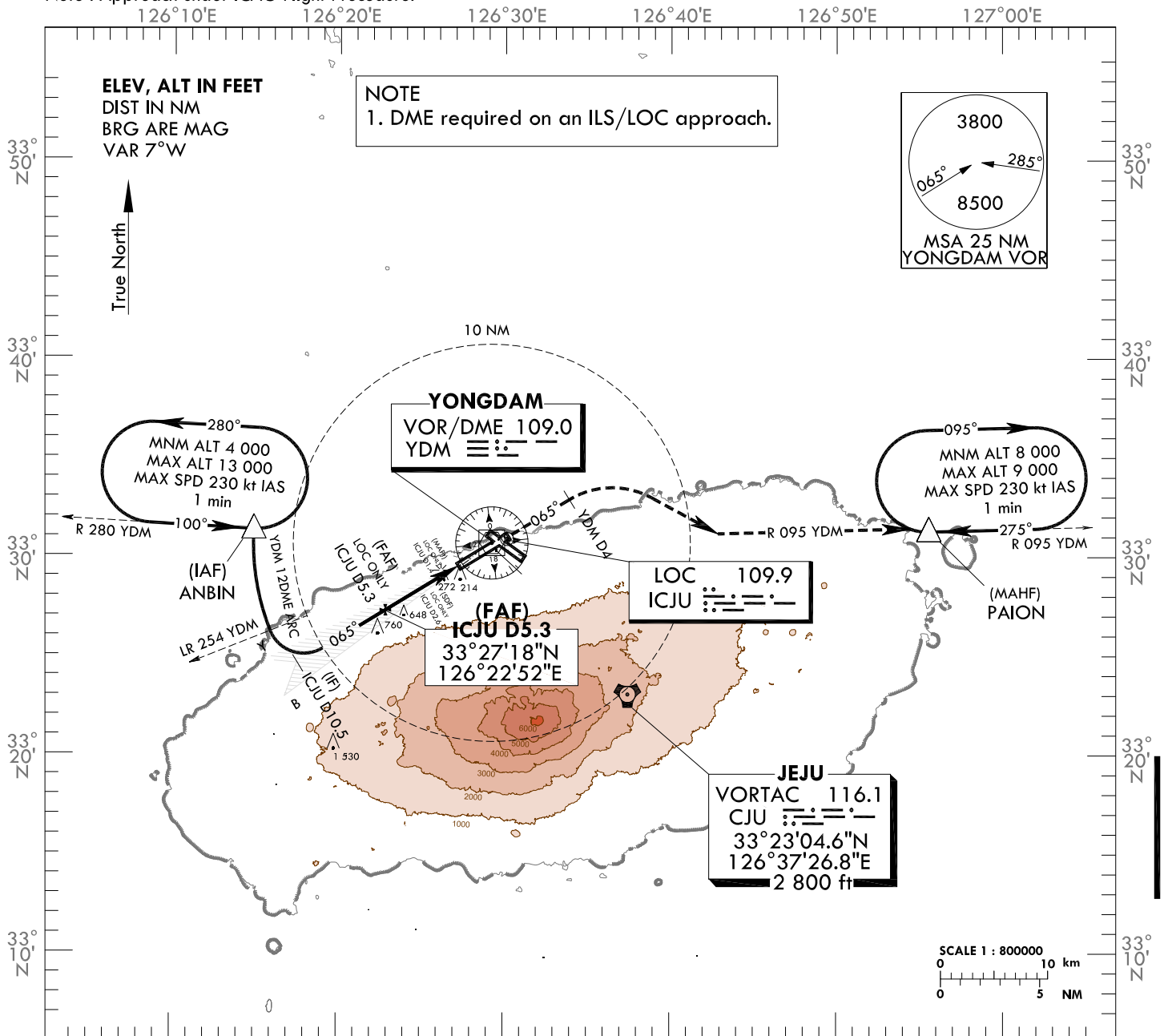
**INSTRUMENT
APPROACH
CHART - ICAO**

AERODROME ELEV 119 ft
HEIGHTS RELATED TO
THR RWY 07 - ELEV 87 ft

JEJU APP	121.2
	124.05
JEJU TWR	118.125
	118.2

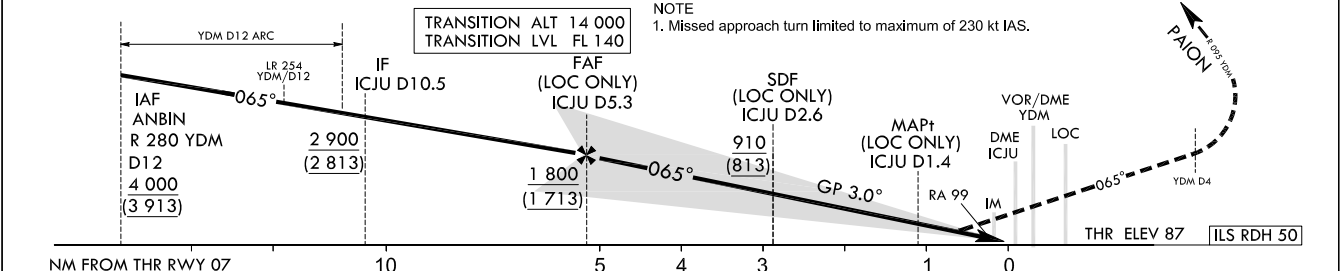
JEJU/Jeju Intl(RKPC)
ILS Y or LOC Y RWY 07
CAT II

Note : Approach under ICAO Flight Procedure.



RECOMMENDED PROFILE(LOC ONLY)	DME ICJU	5	4	3	2	1.4
Final Approach Gradient 5.32%, 323 ft/NM	ALT(HGT)	1 690	1 367	1 044	721	530
		(1 603)	(1 280)	(957)	(634)	(443)

MISSED APPROACH
Climb straight ahead until YDM D4 then RIGHT turn to intercept R 095 YDM to PAION and Hold at 8 000 ft.
NOTE
1. Missed approach turn limited to maximum of 230 kt IAS.



CATEGORY	DA(DH)/MDA(MDH)	RVR 550 m, VIS 750 m					Rate of descent						
		A	B	C	D	DL	Knots	60	90	120	150	180	
CAT-1	FULL	287	RVR 550 m, VIS 750 m					V/V fpm	318	478	637	796	955
	ALS INOP	(200)											
LOC	FULL	530	RVR 550 m, VIS 750 m					V/V fpm	318	478	637	796	955
	ALS INOP	(443)											
CAT-II		187(100)	300 m		300 m ¹ /350 m								

1) For CAT D/DL aeroplane conducting an autoland.
* Timing Not authorized for defining MAPt.
* Circling Not authorized.

Change : Amended coordinate and radial format.

JEJU/Intl(RKPC)
ILS Y or LOC Y RWY 07
CAT II

AERONAUTICAL DATA TABULATION

ILS/LOC Approach to RWY 07 from ANBIN (IAF)		
Fix/point		Coordinates
ANBIN (IAF)	- 12DME ARC /12.00NM YDM	33°31'21.5"N 126°14'55.3"E
10.5D ICJU (IF)	- BRG 65.21°/10.50NM ICJU	33°24'35.0"N 126°17'36.8"E
5.3D ICJU (FAP)	- BRG 65.21°/5.34NM ICJU	33°27'17.6"N 126°22'51.8"E
2.6D ICJU (SDF LOC only)	- BRG 65.21°/2.60NM ICJU	33°28'43.8"N 126°25'39.3"E
1.4D ICJU (MAPt LOC only)	- BRG 65.21°/1.40NM ICJU	33°29'21.6"N 126°26'52.7"E
THR RWY 07		33°29'59.57"N 126°28'06.50"E
DME ICJU		33°30'09.0"N 126°28'15.7"E
YDM VOR/DME		33°30'41.3"N 126°29'15.3"E
4D YDM	- BRG 65.21°/4.00NM YDM	33°32'42.4"N 126°33'23.4"E
PAION	- BRG 95.00°/22.00NM YDM	33°31'18.0"N 126°55'34.0"E

**INSTRUMENT
APPROACH
CHART - ICAO**

AERODROME ELEV 119 ft
HEIGHTS RELATED TO
THR RWY 07 - ELEV 87 ft

JEJU APP 121.2
124.05
JEJU TWR 118.125
118.2

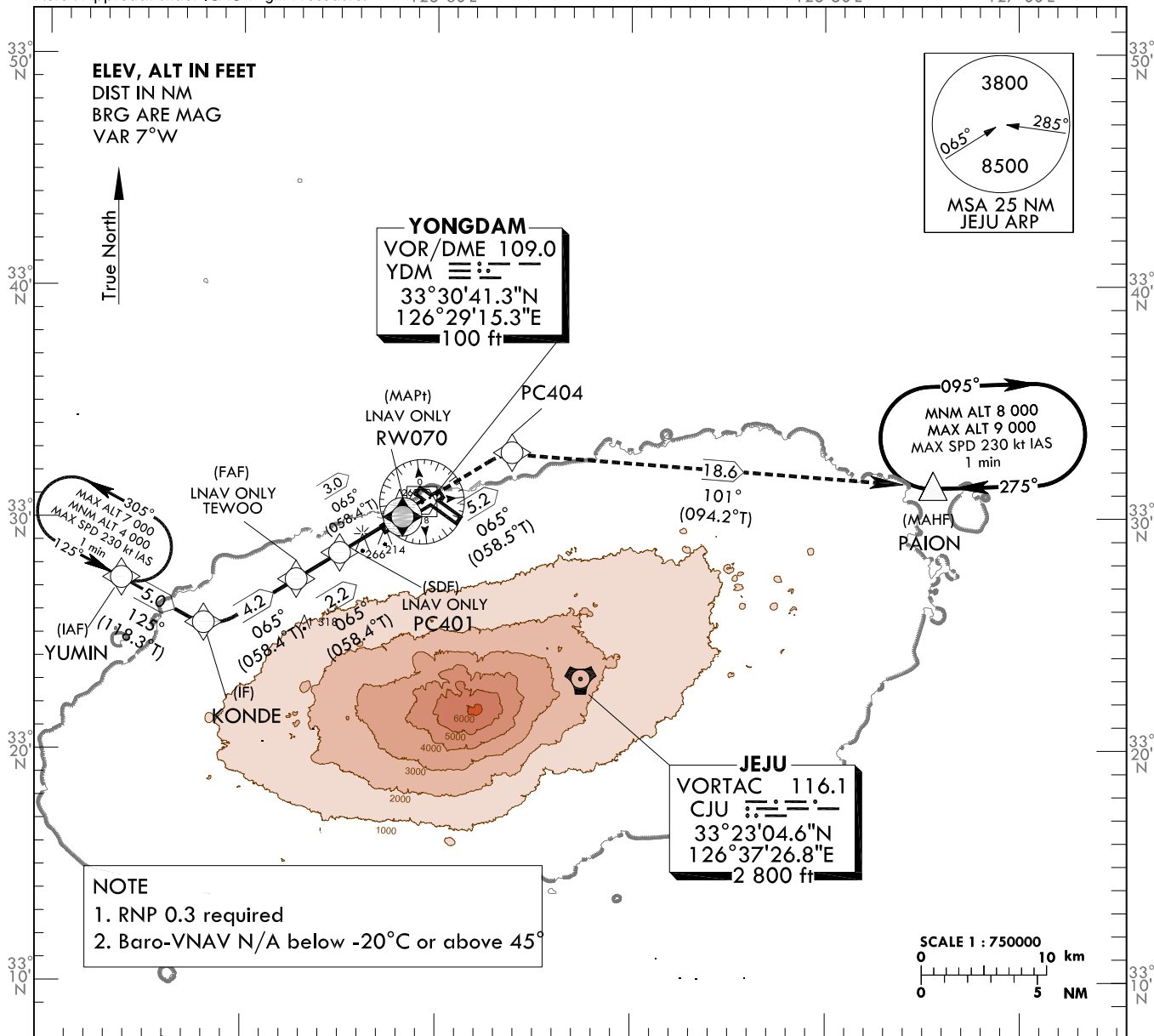
**JEJU/Jeju Intl(RKPC)
RNAV(GNSS) RWY 07**

Note : Approach under ICAO Flight Procedure.

126°30'E

126°50'E

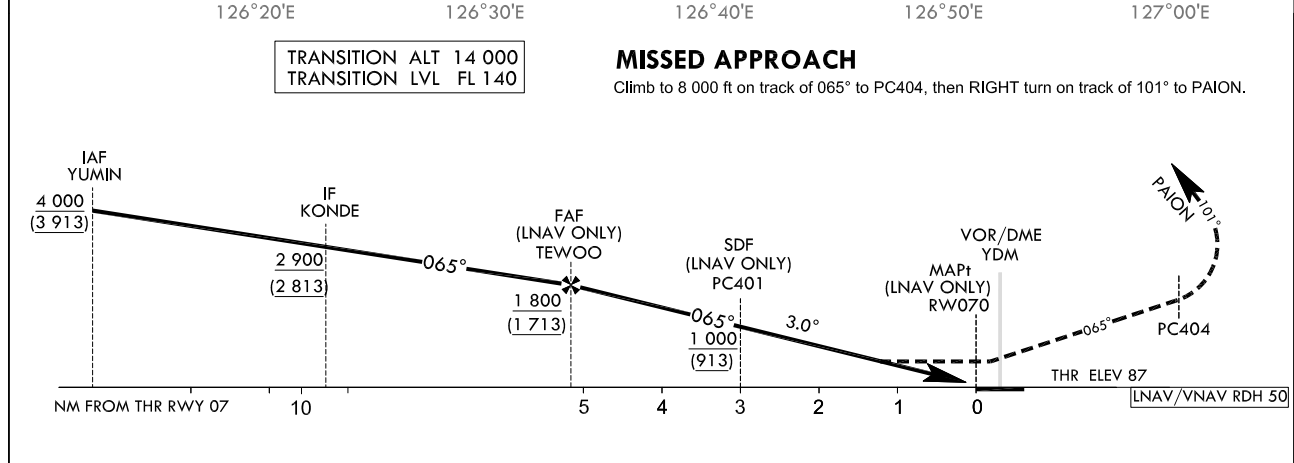
127°00'E



NOTE
1. RNP 0.3 required
2. Baro-VNAV N/A below -20°C or above 45°

TRANSITION ALT 14 000
TRANSITION LVL FL 140

MISSED APPROACH
Climb to 8 000 ft on track of 065° to PC404, then RIGHT turn on track of 101° to PAION.



CATEGORY		DA(H)/MDA(H)	A	B	C	D	Knots					
STA	RNAV/VNAV	FULL	500 (413)		1 200 m	Rate of descent	V/V fpm	318	478	637	796	955
		ALS INOP		1 900 m								
	LNAV	FULL	540 (453)		1 400 m	* Timing Not authorized for defining MAPt. * Circling Not authorized.						
		ALS INOP		2 100 m								

Change : Amended coordinate format.

AERONAUTICAL DATA TABULATION

Instrument Approach Procedure Coding Tables

RNAV(GNSS) RWY 07

Serial Number	Path Descriptor	Waypoint Identifier	Fly-over	Course/Track °M(°T)	Distance (NM)	Turn direction	Altitude (ft)	Speed (kt)	Coordinates	VPA/TCH	Navigation specification	Remarks
001	IF	YUMIN	-	-	-	-	+4 000	-	33°27'25.7"N 126°13'15.5"E	-	RNP APCH	IAF
002	TF	KONDE	-	125(118.3)	5.0	-	+2 900	-	33°25'03.0"N 126°18'31.0"E	-	RNP APCH	IF
003	TF	TEWOO	-	065(058.4)	4.2	-	+1 800	-	33°27'15.3"N 126°22'47.5"E	-	RNP APCH	FAF
004	TF	PC401	-	065(058.4)	2.2	-	+1 000	-	33°28'24.5"N 126°25'01.8"E	-	RNP APCH	SDF
005	TF	RW070	Y	065(058.4)	3.0	-	+540	-	33°29'59.6"N 126°28'06.5"E	-3.00/50	RNP APCH	MAPt
006	TF	PC404	-	065(058.5)	5.2	-	-	-	33°32'42.3"N 126°33'23.4"E	-	RNP APCH	-
007	TF	PAION	Y	101(094.2)	18.6	-	-	-	33°31'18.0"N 126°55'34.0"E	-	RNP APCH	-
008	HM	PAION	Y	275(268.2)	-	R	-9 000 +8 000	-230	33°31'18.0"N 126°55'34.0"E	-	RNP APCH	1 min (Outbound timing)

HOLDING PROCEDURE

Holding Identification	Path Descriptor	Waypoint Identifier	Fly-over	Course/Track °M(°T)	Time (min)	Turn direction	Altitude (ft)	Speed (kt)	Coordinates	VPA/TCH	Navigation specification	Remarks
RNAV(GNSS) RWY 07	HM	YUMIN	Y	125(118.3)	1.0	L	-7 000 +4 000	-230	33°27'25.7"N 126°13'15.5"E	-	RNAV 1	-

Change : Amended coordinate format.

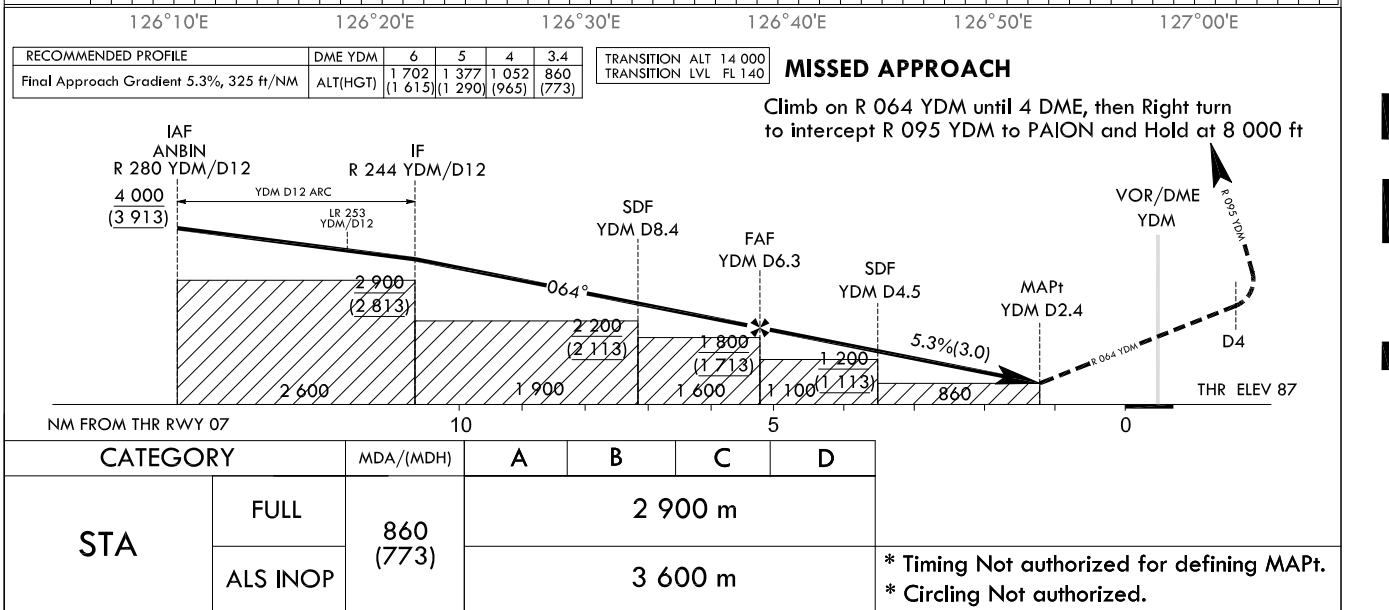
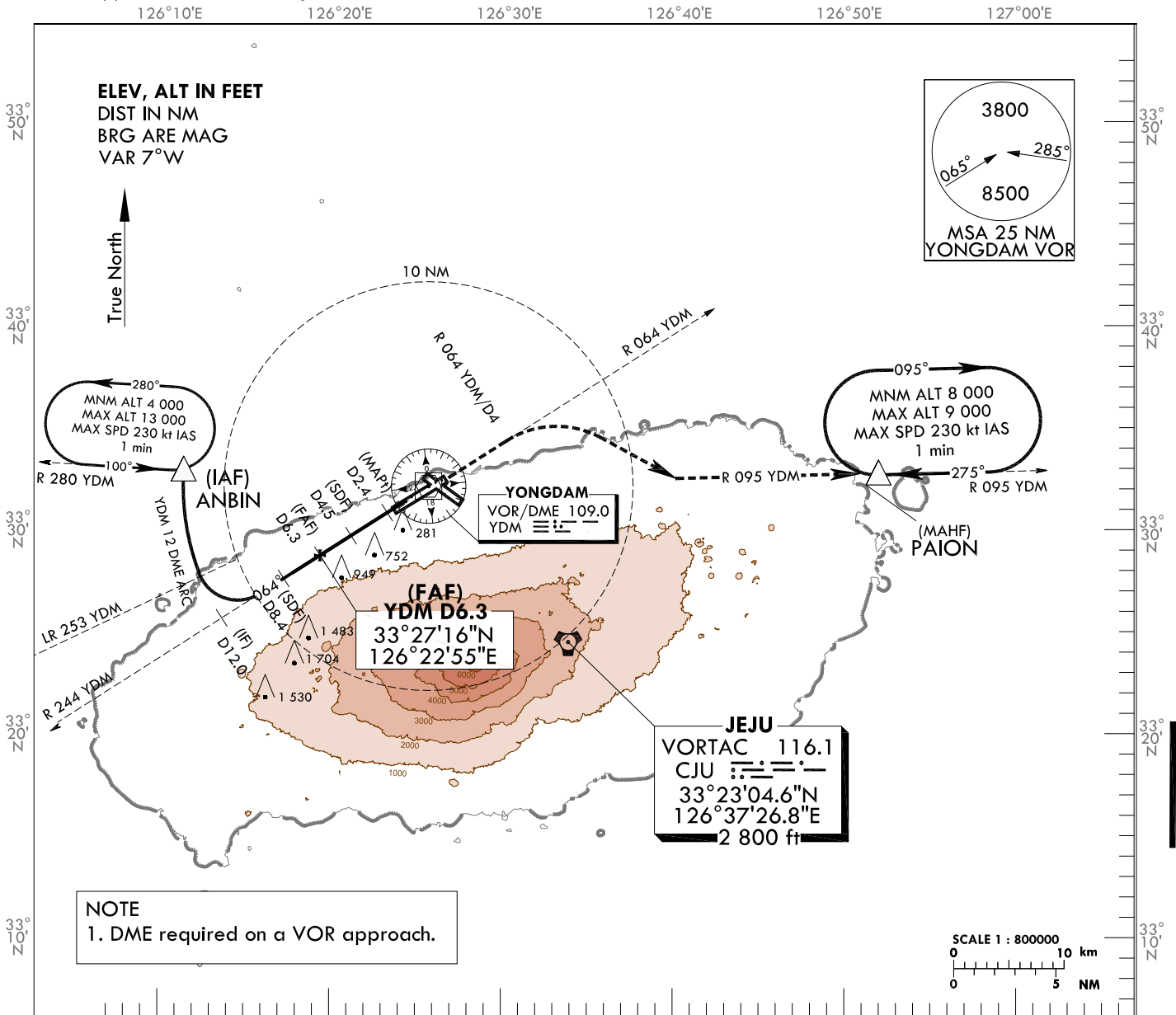
**INSTRUMENT
APPROACH
CHART - ICAO**

AERODROME ELEV 119 ft
HEIGHTS RELATED TO
THR RWY 07 - ELEV 87 ft

JEJU APP	121.2
	124.05
JEJU TWR	118.125
	118.2

JEJU/Jeju Intl(RKPC)
VOR RWY 07

Note : Approach under ICAO Flight Procedure.



Change : Amended coordinate and radial format.

JEJU/Intl(RKPC)

VOR RWY 07

AERONAUTICAL DATA TABULATION

VOR Approach to RWY 07 from ANBIN (IAF)		
Fix/point		Coordinates
ANBIN (IAF)	- 12DME ARC /12.00NM YDM	33°31'21.5"N 126°14'55.3"E
12.0D YDM (IF)	- BRG 63.89°/12.00NM YDM	33°24'10.5"N 126°17'12.1"E
8.4D YDM (SDF)	- BRG 63.89°/8.40NM YDM	33°26'07.9"N 126°20'48.9"E
6.3D YDM (FAF)	- BRG 63.89°/6.30NM YDM	33°27'16.3"N 126°22'55.4"E
4.5D YDM (SDF)	- BRG 63.89°/4.50NM YDM	33°28'14.9"N 126°24'43.9"E
2.4D YDM (MAPt)	- BRG 63.89°/2.40NM YDM	33°29'23.3"N 126°26'50.6"E
THR RWY 07		33°29'59.57"N 126°28'06.50"E
YDM VOR/DME		33°30'41.3"N 126°29'15.3"E
4D YDM	- BRG 64.00°/4.00NM YDM	33°32'51.3"N 126°33'16.9"E
PAION	- BRG 172.32°/22.00NM YDM	33°31'18.0"N 126°55'34.0"E

**INSTRUMENT
APPROACH
CHART - ICAO**

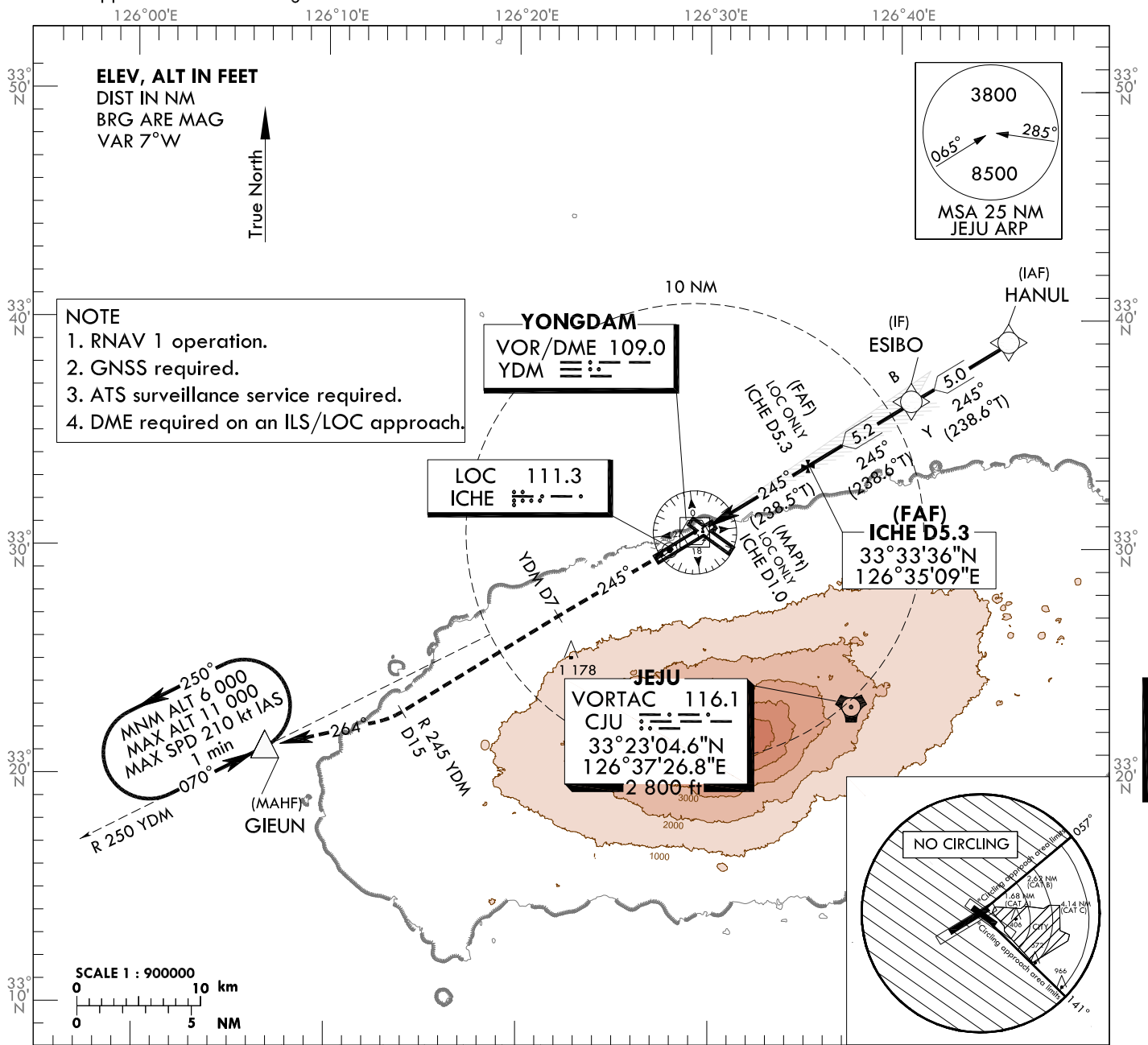
AERODROME ELEV 119 ft
HEIGHTS RELATED TO
THR RWY 25 - ELEV 76 ft

JEJU APP	121.2
	124.05
JEJU TWR	118.125
	118.2

JEJU/Jeju Intl(RKPC)

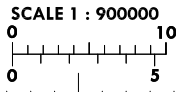
ILS Z or LOC Z RWY 25

Note : Approach under ICAO Flight Procedure.



NOTE
1. RNAV 1 operation.
2. GNSS required.
3. ATS surveillance service required.
4. DME required on an ILS/LOC approach.

MINM ALT 6 000
MAX ALT 11 000
MAX SPD 210 kt IAS
1 min
070°

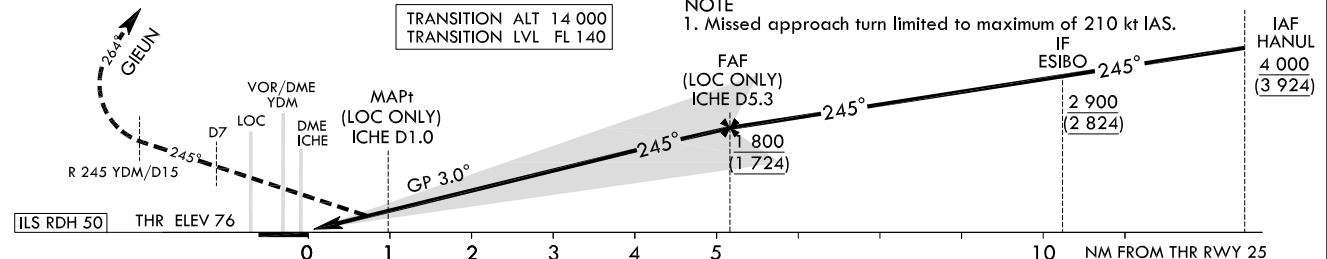


RECOMMENDED PROFILE(LOC ONLY)		DME ICHE	5	4	3	2	1.0
Final Approach Gradient 5.32%, 323 ft/NM	ALT(HGT)	(1 691)	(1 368)	(1 045)	(722)	(400)	(324)
		(1 615)	(1 292)	(969)	(646)	(324)	

MISSED APPROACH

Climb straight ahead until YDM D7 to intercept R 245 YDM/D15, turn RIGHT heading 264 to GIEUN and Hold at 6 000 ft

NOTE
1. Missed approach turn limited to maximum of 210 kt IAS.



CATEGORY	DA(DH)/MDA(MDH)	A					B					C					D					DL					
		Knots					Knots					Knots					Knots					Knots					
STA	CAT-1	FULL	276					750 m					1 200 m					Rate of descent					V/V fpm				
		ALS INOP	(200)					1 200 m					1 200 m					318 478 637 796 955									
STA	LOC	FULL	400					1 200 m					1 200 m					* Timing Not authorized for defining MAPt. * MDH for Circling related to aerodrome ELEV 119 ft									
		ALS INOP	(324)					1 600 m					1 600 m														
Circling			790 (671)					890 (771)					1 380 (1 261)					N/A									
			3 100 m					3 600 m					5 000 m														

Change : Amended coordinate and radial format.

JEJU/Jeju Intl(RKPC)
ILS Z or LOC Z RWY 25

AERONAUTICAL DATA TABULATION

ILS/LOC Approach to RWY 25 from HANUL (IAF)		
Fix/point		Coordinates
HANUL (IAF)		33°38'58.6"N 126°45'38.8"E
ESIBO (IF)	- BRG 245.35°/5.00NM	33°36'21.9"N 126°40'32.2"E
5.3D ICHE (FAP)	- BRG 245.23°/5.34NM ICHE	33°33'36.4"N 126°35'08.7"E
1.0D ICHE (MAPt LOC only)	- BRG 245.23°/1.00NM ICHE	33°31'20.0"N 126°30'43.0"E
THR RWY 25		33°30'53.56"N 126°29'51.51"E
DME ICHE		33°30'52.1"N 126°29'39.4"E
YDM VOR/DME		33°30'41.3"N 126°29'15.3"E
7.0D YDM	- BRG 245.23°/7.00NM YDM	33°26'59.7"N 126°22'08.6"E
15.0D YDM	- BRG 244.94°/15.00NM YDM	33°22'45.9"N 126°14'01.5"E
GIEUN	- BRG 263.84°/21.00NM YDM	33°21'11.1"N 126°06'52.2"E

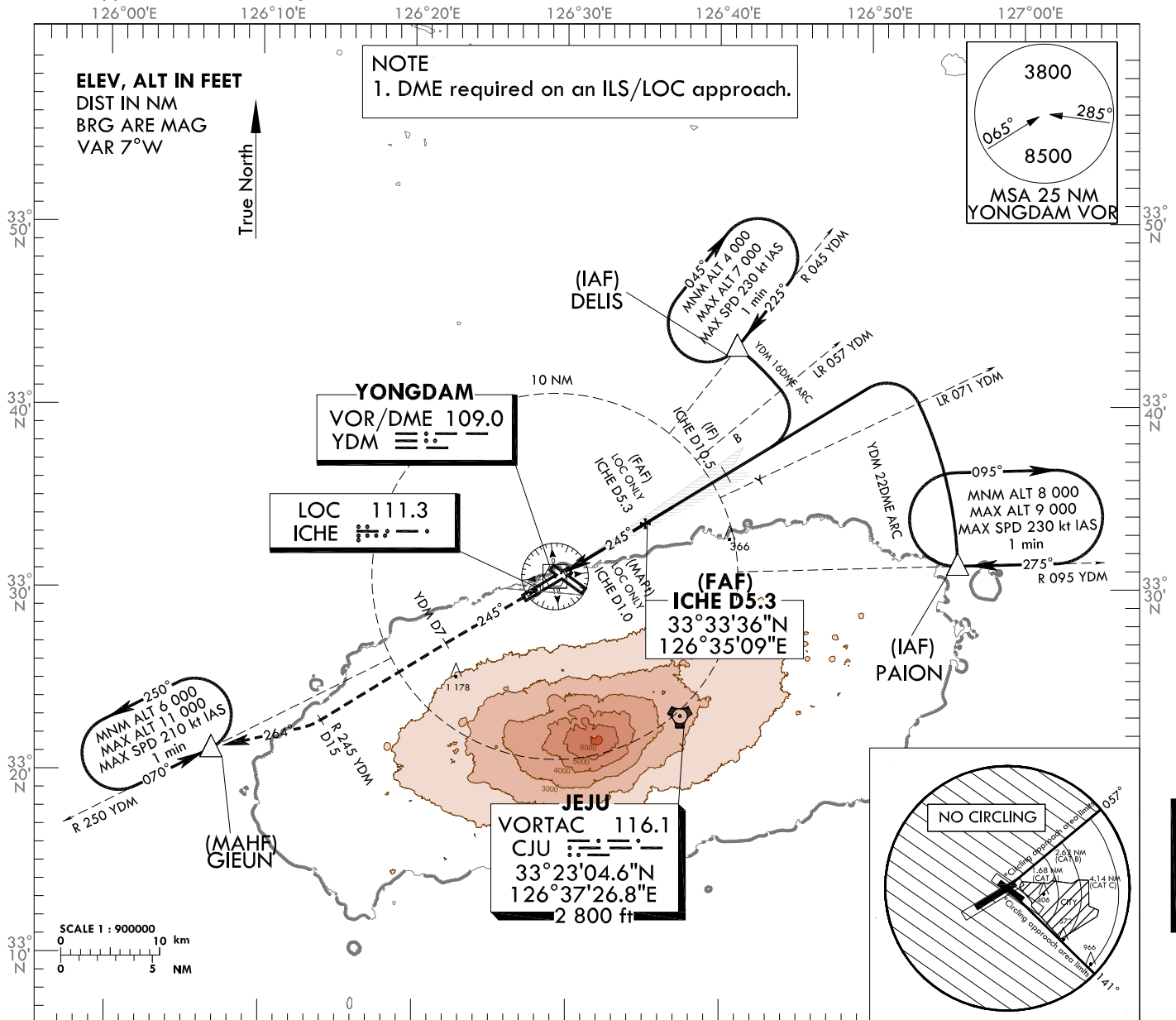
**INSTRUMENT
APPROACH
CHART - ICAO**

AERODROME ELEV 119 ft
HEIGHTS RELATED TO
THR RWY 25 - ELEV 76 ft

JEJU APP 121.2
124.05
JEJU TWR 118.125
118.2

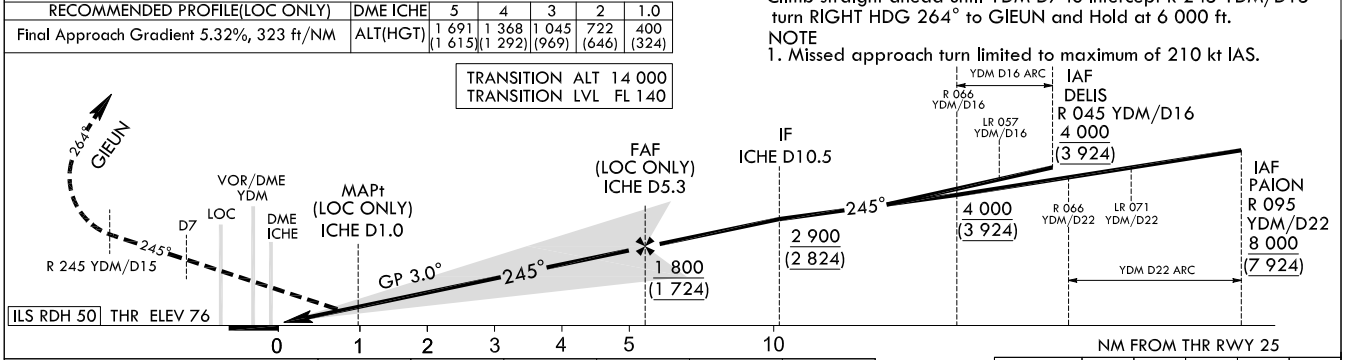
JEJU/Jeju Intl(RKPC)
ILS Y or LOC Y RWY 25

Note : Approach under ICAO Flight Procedure.



RECOMMENDED PROFILE(LOC ONLY) DME ICHE 5 4 3 2 1.0
Final Approach Gradient 5.32%, 323 ft/NM ALT(HGT) 1 691 (1 615) 1 368 (1 292) 1 045 (969) 722 (646) 400 (324)

MISSED APPROACH
Climb straight ahead until YDM D7 to intercept R 245 YDM/D15 turn RIGHT HDG 264° to GIJEUN and Hold at 6 000 ft.
NOTE
1. Missed approach turn limited to maximum of 210 kt IAS.



CATEGORY	DA(DH)/MDA(MDH)	NM FROM THR RWY 25					Rate of descent V/V fpm	Knots	60	90	120	150	180
		A	B	C	D	DL							
STA	CAT-1	FULL	750 m					318	478	637	796	955	
		ALS INOP	1 200 m										
LOC	FULL	1 200 m					* Timing Not authorized for defining MAPt. * MDH for Circling related to aerodrome ELEV 119 ft	318	478	637	796	955	
	ALS INOP	1 600 m											
Circling			790 (671) 3 100 m	890 (771) 3 600 m	1 380 (1 261) 5 000 m	N/A							

Change : Amended coordinate and radial format.

AERONAUTICAL DATA TABULATION

ILS/LOC Approach to RWY 25 from DELIS (IAF) or PAION (IAF)		
Fix/point		Coordinates
DELIS (IAF)	- 16DME ARC /16.00NM YDM	33°43'16.2"N 126°41'08.0"E
PAION (IAF)	- 22DME ARC /22.00NM YDM	33°31'18.0"N 126°55'34.0"E
10.5D ICHE (IF)	- BRG 245.35°/10.50NM ICHE	33°36'18.2"N 126°40'24.9"E
5.3D ICHE (FAP)	- BRG 245.23°/5.34NM ICHE	33°33'36.4"N 126°35'08.7"E
1.0D ICHE (MAPt LOC only)	- BRG 245.23°/1.00NM ICHE	33°31'20.0"N 126°30'43.0"E
THR RWY 25		33°30'53.56"N 126°29'51.51"E
DME ICHE		33°30'52.1"N 126°29'39.4"E
YDM VOR/DME		33°30'41.3"N 126°29'15.3"E
7.0D YDM	- BRG 245.23°/7.00NM YDM	33°26'59.7"N 126°22'08.6"E
15.0D YDM	- BRG 244.94°/15.00NM YDM	33°22'45.9"N 126°14'01.5"E
GIEUN	- BRG 263.84°/21.00NM YDM	33°21'11.1"N 126°06'52.2"E

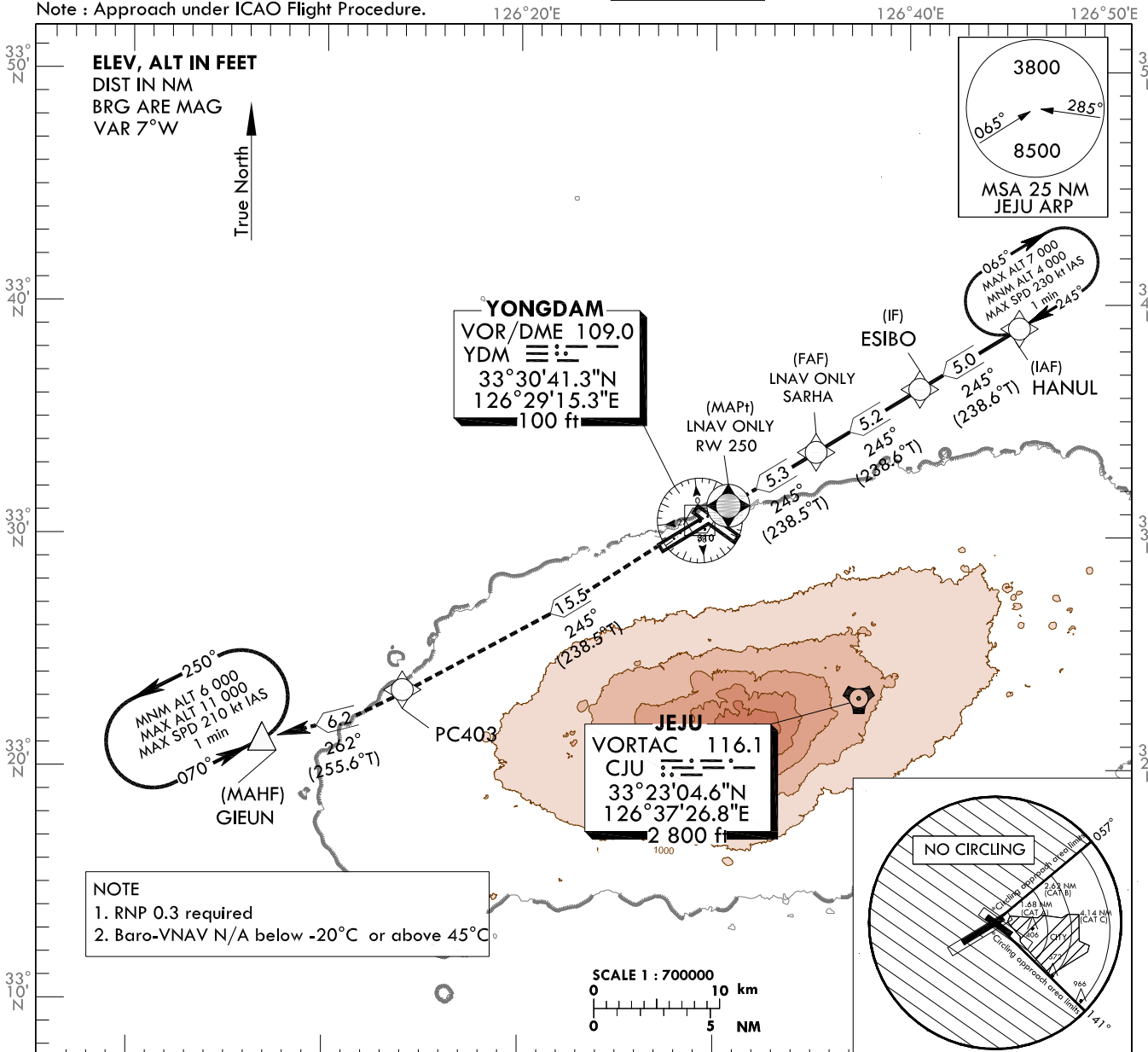
**INSTRUMENT
APPROACH
CHART - ICAO**

AERODROME ELEV 119 ft
HEIGHTS RELATED TO
THR RWY 25 - ELEV 76 ft

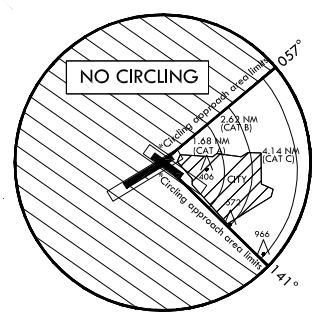
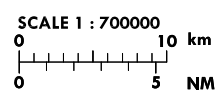
JEJU APP 121.2
124.05
JEJU TWR 118.125
118.2

JEJU/Jeju Intl(RKPC)
RNAV(GNSS) RWY 25

Note : Approach under ICAO Flight Procedure.

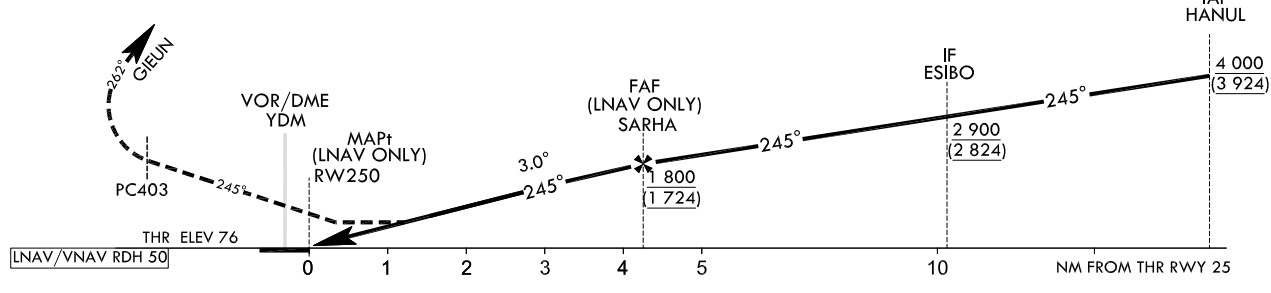


NOTE
1. RNP 0.3 required
2. Baro-VNAV N/A below -20°C or above 45°C



MISSED APPROACH

TRANSITION ALT 14 000
TRANSITION LVL FL 140
Climb to 6 000 ft on track of 245° to PC403, then RIGHT turn on track of 262° to GIEUN.



CATEGORY	DA(H)/MDA(H)	A	B	C	D	Rate of descent	Knots					
							60	90	120	150	180	
STA	LNNAV/VNAV	FULL	490	1 500 m			V/V fpm	319	478	637	797	956
		ALS INOP	(414)	1 900 m								
	LNNAV	FULL	520	1 700 m			* Timing Not authorized for defining MAPt. * MDH for Circling related to aerodrome ELEV 119 ft					
		ALS INOP	(444)	2 100 m								
Circling			790 (671) 3 100 m	890 (771) 3 600 m	1 380 (1 261) 5 000 m	N/A						

Change : Amended coordinate format.

AERONAUTICAL DATA TABULATION

Instrument Approach Procedure Coding Tables

RNAV(GNSS) RWY 25

Serial Number	Path Descriptor	Waypoint Identifier	Fly-over	Course/Track °M(T)	Distance (NM)	Turn direction	Altitude (ft)	Speed (kt)	Coordinates	VPA/TCH	Navigation specification	Remarks
001	IF	HANUL	-	-	-	-	+4 000	-	33°38'58.6"N 126°45'38.8"E	-	RNP APCH	IAF
002	TF	ESIBO	-	245(238.6)	5.0	-	+2 900	-	33°36'21.9"N 126°40'32.2"E	-	RNP APCH	IF
003	TF	SARHA	-	245(238.6)	5.2	-	+1 800	-	33°33'38.6"N 126°35'13.1"E	-	RNP APCH	FAF
004	TF	RW250	Y	245(238.5)	5.3	-	+520	-	33°30'53.6"N 126°29'51.5"E	-3.00/50	RNP APCH	MAPt
005	TF	PC403	-	245(238.5)	15.5	-	-	-	33°22'44.4"N 126°14'03.0"E	-	RNP APCH	-
006	TF	GIEUN	Y	262(255.6)	6.2	-	-	-	33°21'11.1"N 126°06'52.2"E	-	RNP APCH	-
007	HM	GIEUN	Y	070(063.2)	-	L	-11 000 +6 000	-210	33°21'11.1"N 126°06'52.2"E	-	RNP APCH	1 min (Outbound timing)

HOLDING PROCEDURE

Serial Number	Path Descriptor	Waypoint Identifier	Fly-over	Course/Track °M(T)	TIME (min)	Turn direction	Altitude (ft)	Speed (kt)	Coordinates	VPA/TCH	Navigation specification	Remarks
RNAV(GNSS) RWY 25	HM	HANUL	Y	245(238.6)	1.0	R	-7 000 +4 000	-230	33°38'58.6"N 126°45'38.8"E	-	RNAV 1	-

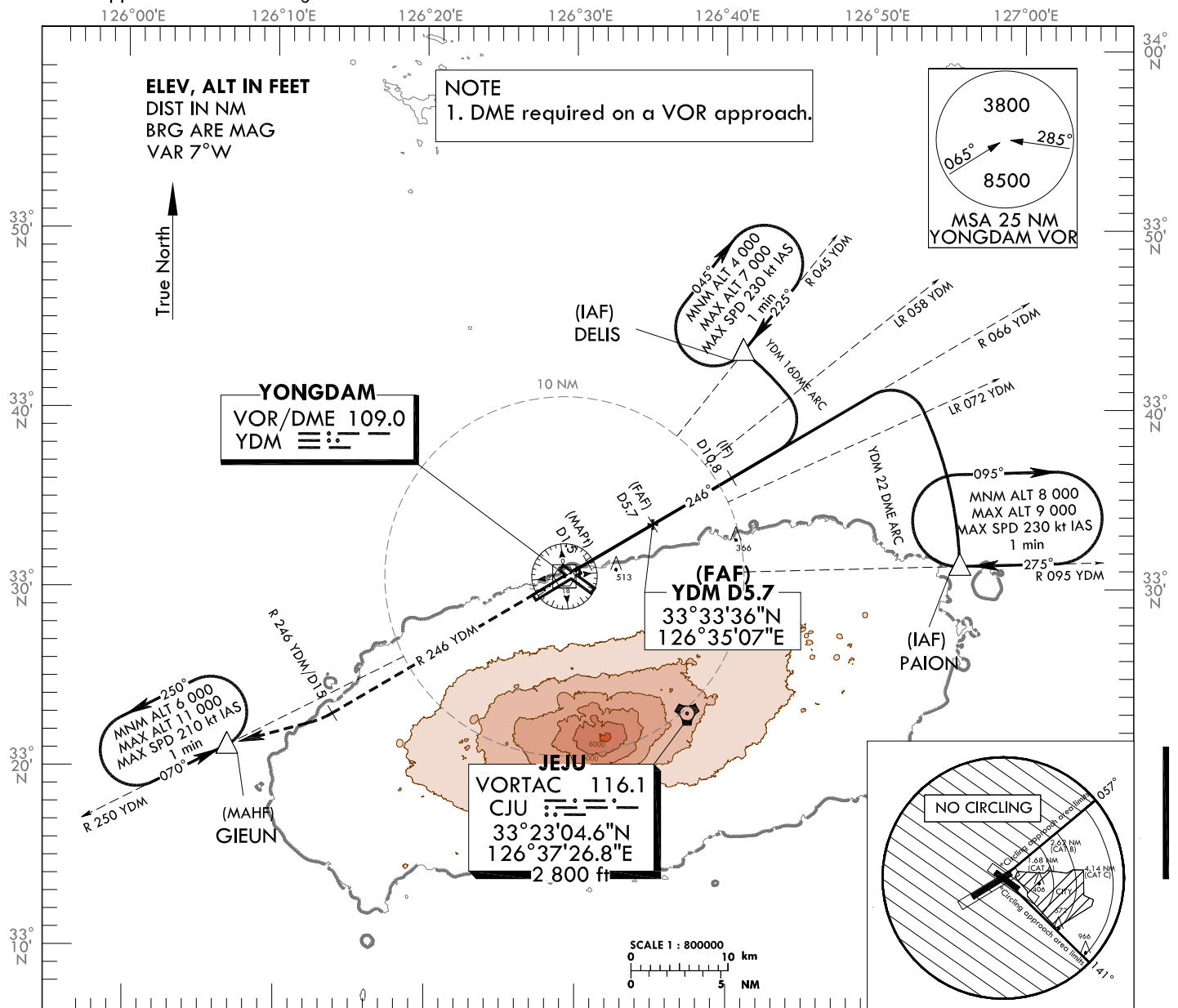
**INSTRUMENT
APPROACH
CHART - ICAO**

AERODROME ELEV 119 ft
HEIGHTS RELATED TO
THR RWY 25 - ELEV 76 ft

JEJU APP 121.2
124.05
JEJU TWR 118.125
118.2

JEJU/Jeju Intl(RKPC)
VOR RWY 25

Note : Approach under ICAO Flight Procedure.

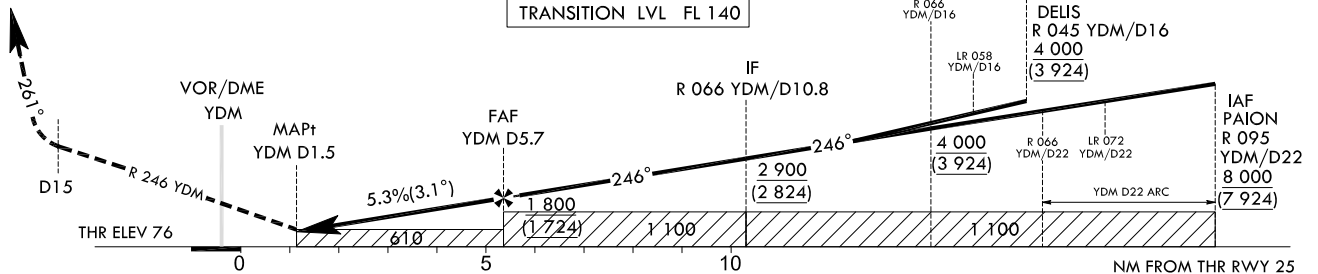


MISSED APPROACH

Climb on R 246 YDM until 15 DME, then turn Right HDG 261° to GIEUN and Hold at 6 000 ft.

TRANSITION ALT 14 000
TRANSITION LVL FL 140

RECOMMENDED PROFILE	DME YDM	5	4	3	2
Final Approach Gradient 5.34%, 325 ft/NM	ALT(HGT)	1 573 (1 497)	1 248 (1 172)	924 (848)	610 (534)



CATEGORY		MDA(MDH)	A	B	C	D
STA	FULL	610 (534)	2 000 m			
	ALS INOP		2 400 m			
Circling			790 (671) 3 100 m	890 (771) 3 600 m	1 380 (1 261) 5 000 m	N/A

* Timing Not authorized for defining MAPt.
* MDH for Circling related to aerodrome ELEV 119 ft

Change : Amended coordinate and radial format.

JEJU/Intl(RKPC)

VOR RWY 25

AERONAUTICAL DATA TABULATION

VOR Approach to RWY 25 from DELIS (IAF) or PAION (IAF)		
Fix/point		Coordinates
DELIS (IAF)	- 16DME ARC/16.00NM YDM	33°43'16.2"N 126°41'08.0"E
PAION (IAF)	- 22DME ARC/22.00NM YDM	33°31'18.0"N 126°55'34.0"E
10.8D YDM (IF)	- BRG 246.10°/10.80NM YDM	33°36'12.8"N 126°40'22.1"E
5.7D YDM (FAF)	- BRG 246.10°/5.70NM YDM	33°33'36.4"N 126°35'07.1"E
1.5D YDM (MAPt)	- BRG 246.10°/1.50NM YDM	33°31'27.2"N 126°30'47.4"E
THR RWY 25		33°30'53.56"N 126°29'51.51"E
YDM VOR/DME		33°30'41.3"N 126°29'15.3"E
15.0D YDM	- BRG 246.00°/15.00NM YDM	33°22'59.4"N 126°13'51.7"E
GIEUN	- BRG 250.00°/21.00NM YDM	33°21'11.1"N 126°06'52.2"E